

The DINO Solar Light Tower Features A Compact Trailer, Fixed brightness LED Lights, and 24 ft Masts.



DINO Mobile Solar Light Tower

DINO Solar Light Tower features a compact trailer, fixed-brightness LED lights, and 21 ft masts.

- Four heavy-duty LED light fixtures can be programmed for desired brightness from 25% to 100%. The lights can be individually aimed without the use of tools, and they stay where you point them. Select from 100W to 200W settings and up to 160,000 lumens.
- To Maximize battery life, the control is equipped with several selections, including automatic ON/OFF from dusk to dawn and selectable run times from 1 to 12 hours. The system's smart MPPT controller provides up to 30% more charging capacity, maximizing every available amp for optimal charging efficiency.
- The 'Electric Mast Operating Safety System' provides not only safety but also reduces operational requirements.
- With the electric rotating solar panel, the whole system features outstanding power efficiency for reliable performance and long runtime.
- Easy-to-read meters give local access to view all the power performance information.

For more information, please visit our website:

www.super-empower.com



"WE EMPOWER WATT MATTERS"



ABOUT OUR DINO

DINO Mobile Solar Light Tower

A COMPACT TRAILER, FIXED-BRIGHTNESS LED LIGHTS, AND 24FT MASTS

DINO Solar Light Towers provide bright, energy-efficient lighting solutions. Powered by free renewable energy from the sun, in conjunction with heavy-duty LED light fixtures, it can be used in moderate to heavy lighting applications where a diesel, gas, or electric generator-powered light tower is needed.



Flexible Light Distribution Range

- Collapsed height of 10 ft (3m)
- Maximum of 24ft tall, providing a range of light distributions



Heavy Duty Construction

- Steel mast, 5 sections, 24ft maximum
- Sealed, maintenance-free batteries
- Powder-coated body, high-visibility warning strip
- Provides a wider illumination area at 24ft max height



Clean, Quiet & Environmental Friendly

- No toxic generator exhaust
- Quiet and produce no fumes
- Ideal alternative to diesel or gas generator-powered light tower



Greater Cost Savings

- Eliminates trenching, cabling, electricity, and diesel fuel costs.
- Low maintenance with no engine or alternator



Easy To Operation and Transport

- 4 Forklift pockets, easy move
- 4 manual stabilizer legs
- Adjustable-tilt solar array
- Automatic and manual operating modes including power saving modes
- Dimmable LED lights can be individually aimed at different angles
- Electric mast operating safety system at different angles



DINO SOLAR MOBILE LIGHT TOWER

UP 160,000 Lumen

DINO 4X100W

Light: 4X100W

Lumen: 80,000LM

Solar Panel:
2 X 435W, Rotate and Tilt

AC Charger:
2.5KW / 2.5KVA, AC120V

Battery: 4 X 200Ah



DINO 4X100W

DINO 4X200W

Light: 4X200W

Lumen: 160,000LM

Solar Panel: 4X435W

AC Charger:
2.5KW / 2.5KVA, AC120V

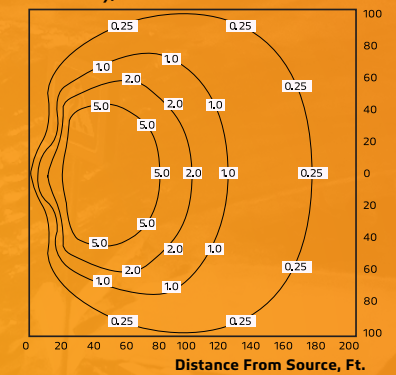
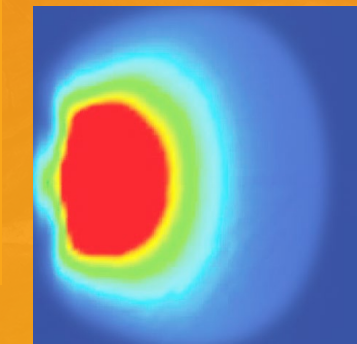
Battery: 8 X 200Ah



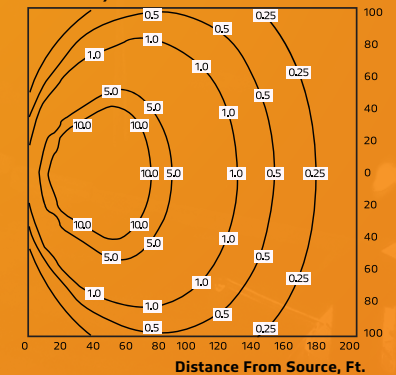
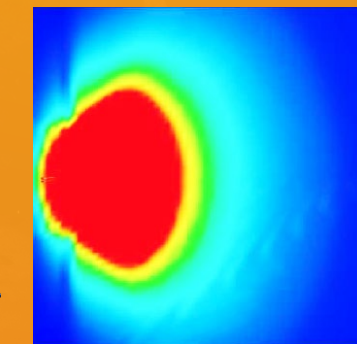
DINO 4X200W

PERFORMANCE

DINO 4 X 100W	LIGHT	Single Light Tower Isolines
	LIGHT HEIGHT	24 ft.
	LIGHTING AREA	200 X 200 ft.
	TOTAL ACREAGE	0.92
	ILLUMINANCE	1.78 fc Average across entire area at 100% brightness



DINO 4 X 200W	LIGHT	Single Light Tower Isolines
	LIGHT HEIGHT	24 ft.
	LIGHTING AREA	200 X 200 ft.
	TOTAL ACREAGE	0.92
	ILLUMINANCE	3.54 fc Average across entire area at 100% brightness

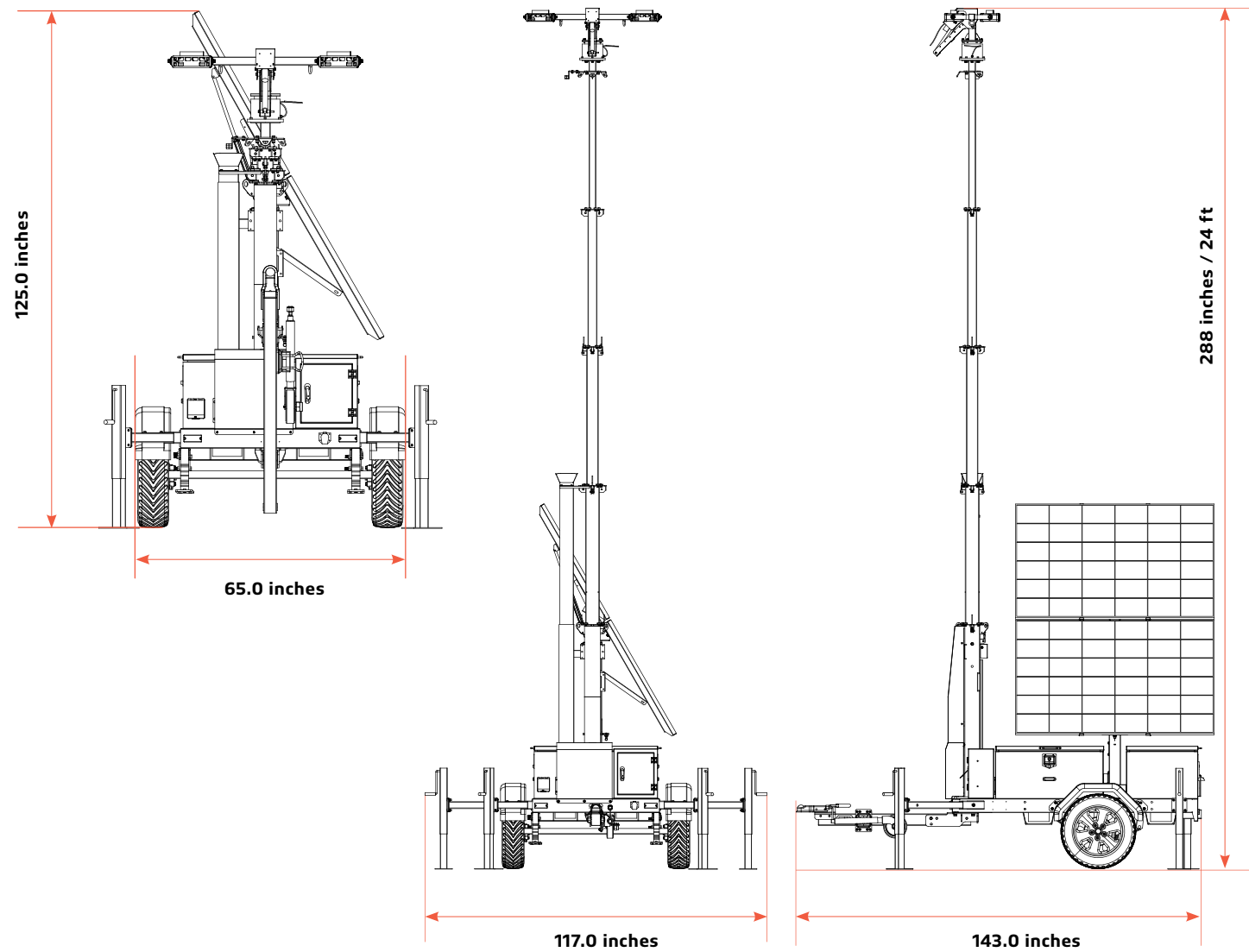


Typical recommended light levels based on Illuminating Engineering Society (IES) documents except where noted:

- General Construction:** 10 fc
- Self-parking:** 1 fc
- Active Industrial Yards:** 5 fc
- Haul Roads:** 0.5 to 1 fc
- Flagger:** 5 fc (per MUTCD)
- Quarries & Pit Mines:** 5 fc

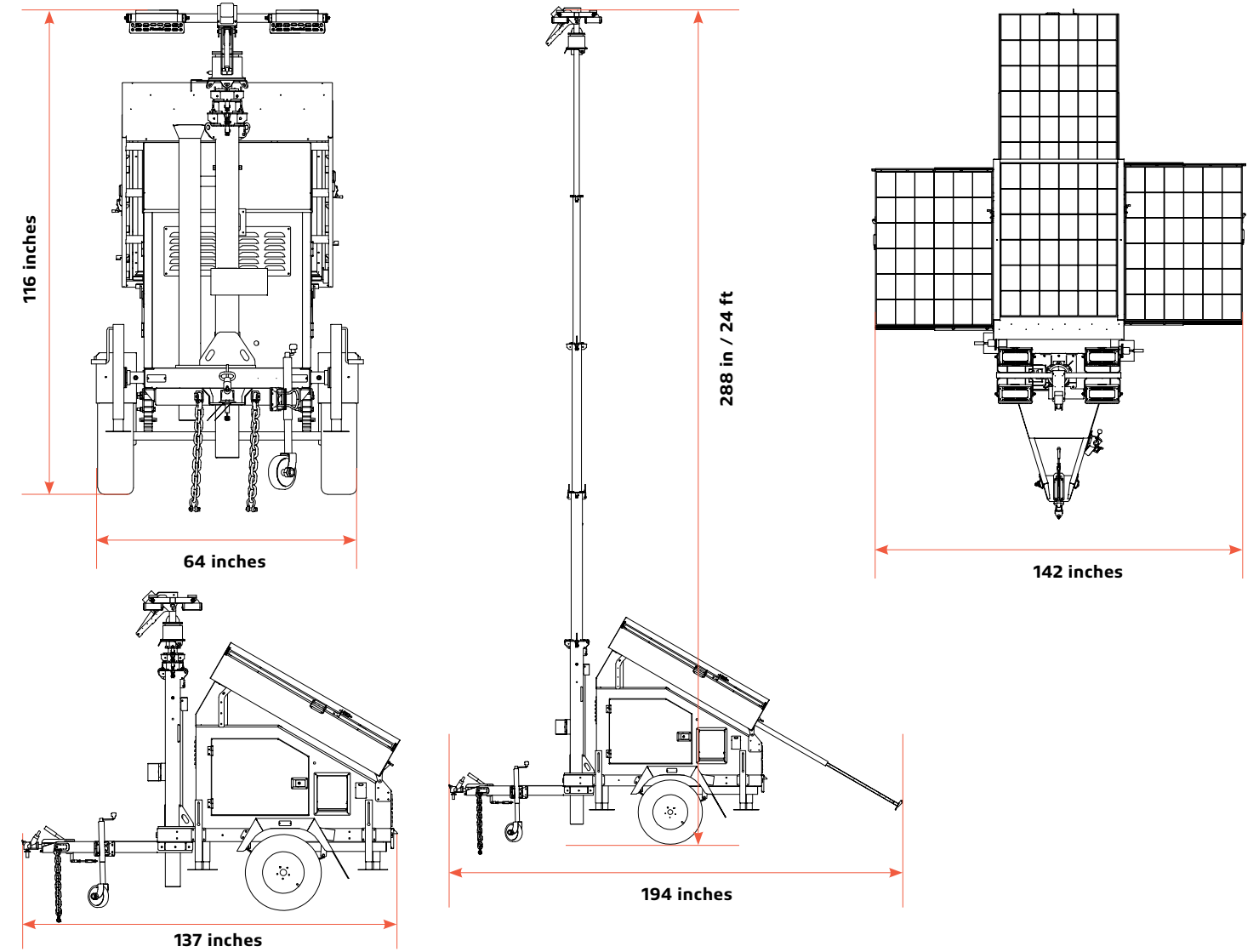
DIMENSIONAL DRAWINGS

DINO 4 X 100W Mobile Solar Light Tower



SPECIFICATIONS & PERFORMANCE

DINO 4 X 200W Mobile Solar Light Tower



SPECIFICATIONS & PERFORMANCE

DINO Solar Mobile Light Towers provide bright, energy-efficient lighting solutions. Powered by free renewable energy from the sun, in conjunction with heavy-duty LED light fixtures, it can be used in moderate to heavy lighting applications where a diesel, gas, or electric generator-powered light tower is needed.

SPECIFICATIONS	DINO 4X100W
COVERAGE AREA	35,000 ft ²
LIGHT	4 X 100W adjustable LED light fixtures
LUMINOUS FLUX	20,000 lumens per fixture, 80,000 total lumens
BATTERY CAPACITY	4 X 200Ah, DC12V, 9600Wh
BRIGHTNESS (25%)	76 hours
BRIGHTNESS (50%)	38 hours
BRIGHTNESS (75%)	25 hours
BRIGHTNESS (100%)	19.2 hours
BATTERIES	GEL (Charging Temp. -20°C/-4°F to 50°C/122°F)
WINCH	Electric Lifting
CHARGE TIME	9 hours by Solar, 5 hours by AC
AC CHARGER	2.5kW / 2.5kVA, AC120V, external plug
DEPLOYED FOOTPRINT	N/A 143 X 65in (362 X 165cm), L X W
WEIGHT APPROX.	1984lb (900kg)
SOLAR PANEL	
TYPE	Mono Crystal Silicon
QUANTITY	2
WATTAGE	2 X 435W, Rotate and Tilt

MAST

HEIGHT	24 feet (7.3m) fully extended; lights operate at any height
SECTIONS	5

TRAILER

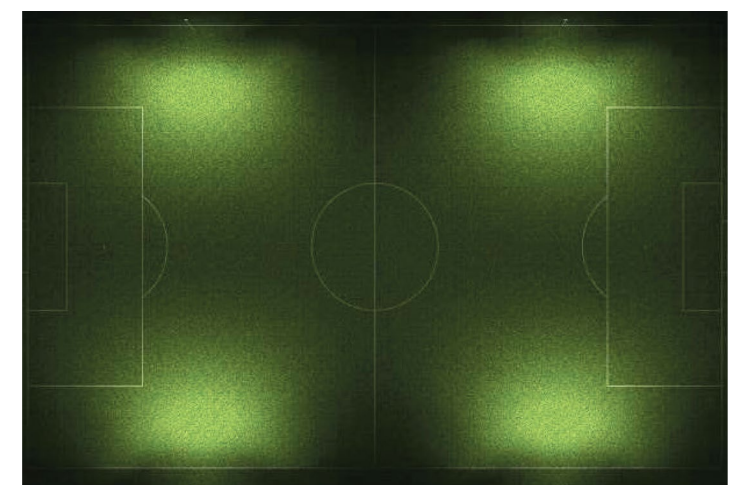
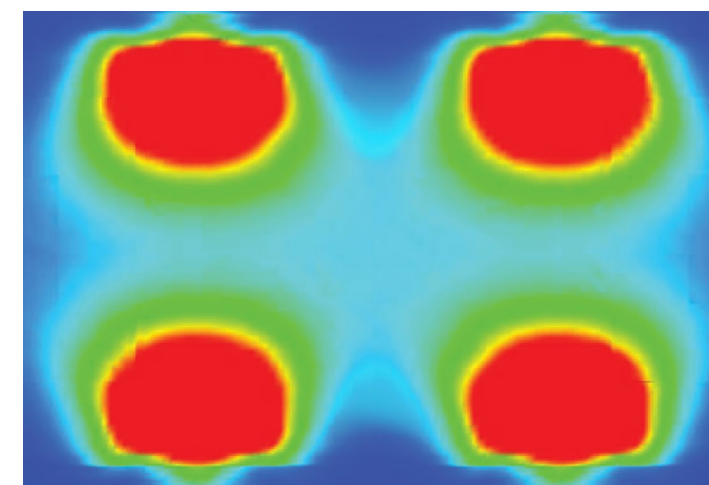
TIRE	2 X 14" rim
TOW HITCH	2" ball
AXLE	Singe Suspension
FORKLIFT HOLE	2
FORKLIFT HOLE	4 X Manual Galvanized

WARRANTY

WARRANTY	1 year
----------	--------

LIGHT Four Light Towers on a Regulation Soccer Field
LIGHT HEIGHT 24 ft.
LIGHTING AREA 380 X 260 ft.
TOTAL ACREAGE 2.27
ILLUMINANCE 3.08 fc Average across entire area at 100% brightness

AVERAGE ILLUMINANCE, FC



SPECIFICATIONS & PERFORMANCE

DINO Solar Mobile Light Towers provide bright, energy-efficient lighting solutions. Powered by free renewable energy from the sun, in conjunction with heavy-duty LED light fixtures, it can be used in moderate to heavy lighting applications where a diesel, gas, or electric generator-powered light tower is needed.

SPECIFICATIONS	DINO 4 X 200W
COVERAGE AREA	35,000 ft ²
LIGHT	4 X 200W adjustable LED light fixtures
LUMINOUS FLUX	40,000 lumens per fixture, 160,000 total lumens
BATTERY CAPACITY	8 X 200Ah, DC12V, 19,200Wh
BRIGHTNESS (25%)	76 hours
BRIGHTNESS (50%)	38 hours
BRIGHTNESS (75%)	25 hours
BRIGHTNESS (100%)	19.2 hours
BATTERIES	GEL (Charging Temp. -20°C/-4°F to 50°C/122°F)
WINCH	Electric Lifting
CHARGE TIME	9.3 hours by Solar, 8 hours by AC
AC CHARGER	2.5kW / 2.5kVA, AC120V
DEPLOYED FOOTPRINT	137 X 64in (362 X 165cm), L X W
WEIGHT APPROX.	3086lb (1400kg)
SOLAR PANEL	
TYPE	Mono Crystal Silicon
QUANTITY	4
WATTAGE	4 X 435W, Rotate and Tilt

MAST

HEIGHT	24 feet (7.3m) fully extended; lights operate at any height
SECTIONS	5

TRAILER

TIRE	2 X 15" rim
TOW HITCH	2" ball
AXLE	Singe Suspension
FORKLIFT HOLE	2
FORKLIFT HOLE	4 X Manual Galvanized

WARRANTY

WARRANTY	1 year
----------	--------

- LIGHT** Four Light Towers on a Regulation Soccer Field
- LIGHT HEIGHT** 24 ft.
- LIGHTING AREA** 380 X 260 ft.
- TOTAL ACREAGE** 2.27
- ILLUMINANCE** 6.12 fc Average across entire area at 100% brightness
- AVERAGE ILLUMINANCE, FC**

